

Repair Clamps - Pipeline Repair

Leak Proof sealing WA-RC-RH-2 Models

Fits all American and International Pipes

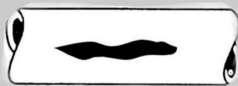
Following types of damage can be repaired:



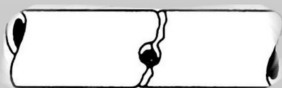
Pipe Longitudinal connection



Broken Damage due pipes



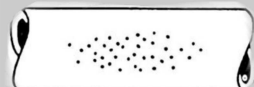
Misaligned cracks



Pin to hot taps



Pipes



Holes

The clamps can be used to repair the following pipe types:

- Ductile Iron (DI)
- Cast Iron (CI)
- Steel (St.)
- Asbestos Cement (AC)
- PE coated steel
- PVC*
- GRP*
- PE*

* If pipe repair clamps are to be used on plastic pipes, please always contact Westatlantic

Repair clamps should be used under following conditions:

- The width of the clamp should be at least equal to the pipe OD.
- The width of the clamp should be 150 mm greater than the length of any crack on pipes with an outside diameter up to 350 mm. On larger pipes this should be at least 200 mm.
- For PVC pipes, the width of the clamps should be 50 % longer and bolt torque should be reduced by 50 %. We prefer that you consult your Westatlantic.
- The maximum allowable distance between two pipe ends should not exceed 10 mm.
- The maximum allowable deflection is 2 degrees.
- The maximum allowable offset should not exceed 3 mm.

Material specification:

- All metal parts:stainless steel AISI 304 or AISI316L.
- Metal parts have been deburred and are passivated to restore the corrosion resistance to its original state after the welding process.
- Double band (two sections) with a working range of 20-22 mm depending on the diameter. For an overview of all working ranges please see our pricelist.
- Standard certified rubber gaskets EPDM or NBR. The rubber is tapered and has a waffle pattern.
- Seamless rubber lining for every clamp diameter.
- Bridge plates are vulcanized into the rubber gasket.
- U-shaped lifter bars.
- Bolts are PTFE (Teflon™) coated to prevent galling.
- Stainless steel washers.
- No loose parts that may get lost during installation.
- No special tools required: a simple wrench will do the job.
- Special tape is used to fix the rubber gasket to the stainless steel band. This tape is flexible and reinforced with glassfibre thread to withstand hot and humid conditions and guarantee a long storage capability.
- Under most circumstances the clamps can be installed. without releasing the pressure on the pipe.



Available sizes:

Westatlantic RS-2 clamps are available in many different working ranges for pipes of ND 80 - ND 800. Please consult our pricelist for more details on the working ranges. Available lengths: 200 / 250 / 300 / 400 / 500 / 600 / 750 mm.

Pressure ratings:

Pressure ratings for water depend on the type of break or damage, pipe OD, medium etc.

Pipe ND 80 up to including ND 150: 16 bar

Pipe ND 175 up to including ND 500: 10 bar

Our clamps can be modified to cope with higher working pressures.

Available rubber gaskets:

Clamps can be supplied with the following types of rubber:

EPDM	- potable water - waste water	max 55 degr. C.
EPDM HT	- potable water - waste water	max 150 degr. C.
NBR	- natural gas - potable water - waste water	max 70 degr. C.
Viton	- several chemicals pls contact Romacon	pls. contact Romacon



The vulcanized bridge plate guarantees a leakproof sealing